

≡ SANSIRI

SETTHASIRI

RUAMCHOK



SETTHASIRI RUAMCHOK PORTRAIT OF SUCCESS

**TIMELESS BEAUTY IN A MODERN CLASSIC STYLE
WHERE SIMPLICITY AND LUXURY SEAMLESSLY ALIGN.**

Complete with thoughtfully designed functionality, each home also comes with an integrated air pollution-proof innovation to ensure the residents an improved quality of life.

Its graceful environs surrounded by the mountain views and an ideal Ruamchok location, conveniently accessible by Second Ring Road to shopping centers and international schools—allow you to lead a fulfilling life well defined by pride and success.



PROJECT INFORMATION

Name	: SETTHASIRI RUAMCHOK
Location	: Second Ring Road, Muang Chiang Mai
Project Area	: 29 rai
Total Units	: 84 units
Project Types	: 2-story single detached house with 4 house types
Usable Area	: 251 / 281 / 319 / 407 sq.m.
Land Size	: 62-167 sq.w.

HOUSE TYPE

MODERN CLASSIC

Drawing inspiration from the timelessness and sophistication of modern classic architecture, the home design elegantly portrays its refinement in every detail and element.

GLORY

251 sq.m. Usable Area | 62 sq.w. Land Size

4 Bedrooms 4 Bathrooms 1 Living Room
1 Housekeeper Room 2 Parking Spots



1st Floor



2nd Floor

VICTORY

281 sq.m. Usable Area | 64 sq.w. Land Size

4 Bedrooms 5 Bathrooms 1 Living Room
1 Upper Floor Family Room 1 Housekeeper Room
3 Parking Spots



1st Floor



2nd Floor

SPLENDOUR

319 sq.m. Usable Area | 75 sq.w. Land Size

4 Bedrooms 5 Bathrooms 1 Living Room
1 Upper Floor Family Room 1 Housekeeper Room
3 Parking Spots



1st Floor



2nd Floor

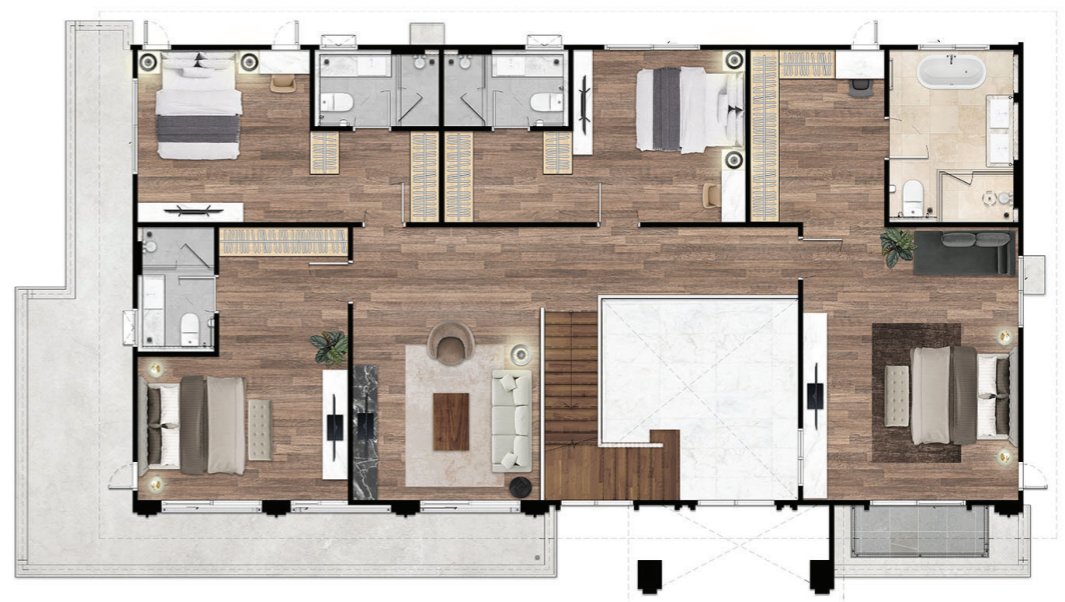
GRANDEUR

407 sq.m. Usable Area | 90 sq.w. Land Size

5 Bedrooms 6 Bathrooms 1 Living Room
1 Upper Floor Family Room 1 Housekeeper Room
4 Parking Spots



1st Floor



2nd Floor



The picture used is for advertising purpose only.

FACILITIES



Salt Water Swimming Pool



Kids Swimming Pool



Fitness Room



Community Garden

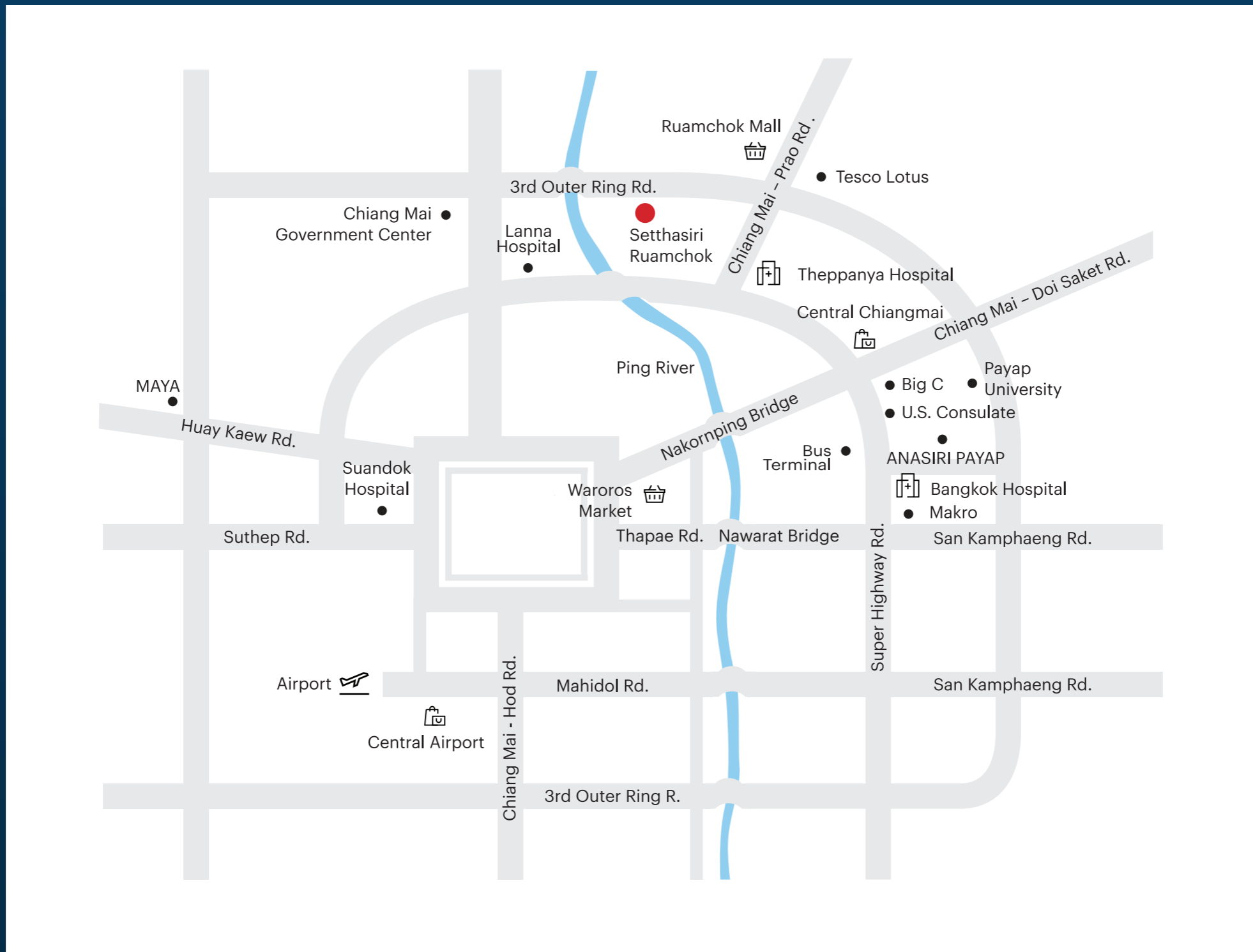


Co-Working Space



Sansiri Backyard

LOCATION



5.4
km

Ruamchok Mall

1.9
km

Nakornpayap
International School

6.6
km

Lanna Hospital

12.9
km

Chiang Mai
Bus Terminal

Lifestyle

- Ruamchok Mall 5.4 km.
- One Nimman 8.2 km.
- Central Chiang Mai 8.4 km.
- Maya Chiang Mai 8.6 km.

Hospitals

- Lanna Hospital 6.6 km.
- Theppanya Hospital 7 km.
- Bangkok Hospital Chiang Mai 10.1 km.
- Chiangmai Ram Hospital 10.2 km.

Educational Institutions

- Nakornpayap International School 1.9 km.
- Chiang Mai International School 7.4 km.
- The Prince Royal's College 8.1 km.
- Singapore International School Chiangmai 8.1 km.
- Chiang Mai University 8.6 km.

Travel

- Chiang Mai Bus Terminal 12.9 km.
- Chiang Mai International Airport 22.6 km.

**For Model Home Viewing , Visit Sales Office
Open Daily 09.00 - 18.00**

Call 1685

Enter Website

SETTHASIRI

RUAMCHOK

CALL 1685 | SANSIRI.COM

Project Owner : Sansiri PLC. Company's registered no. 0107538000665. Head office : 59 Soi Rim Khlong Phra Khanong, Phra Khanong Nuea, Vadhana, Bangkok 10110. Registered capital(THB) : 20,343,625,722.40, Paid up capital(THB) : 16,974,545,581.37 (as of date 3 May 2022). The President : Mr. Apichart Chutrakul. The Project :Setthasiri Ruamchok, land title deed no. 90006,9007,90010,98461,3943 ua: 94030 , approximately area 29 Rai, Located at Sanphisuea, Muang ChiangMai, Chiangmai, the facility area will be 5% of saleable area. The land will be mortgaged with financial institution and submitted the land allocation permit. The construction will be started in Mar 2023 and facility area expected to be completed in Dec 2025.